

# INSTRUCTIONS

© 2025, Speedway Motors, Inc.



## 910-31949 - 1955-57 Chevy Car Front Disc Brake Kit - Complete Kit

## 916-31915 - Bracket Kit for 1955-57 Chevy Car

This kit fits 1969-72 11" GM midsize rotors and 1969-77 GM midsize calipers to your 1955-57 Chevy spindles.

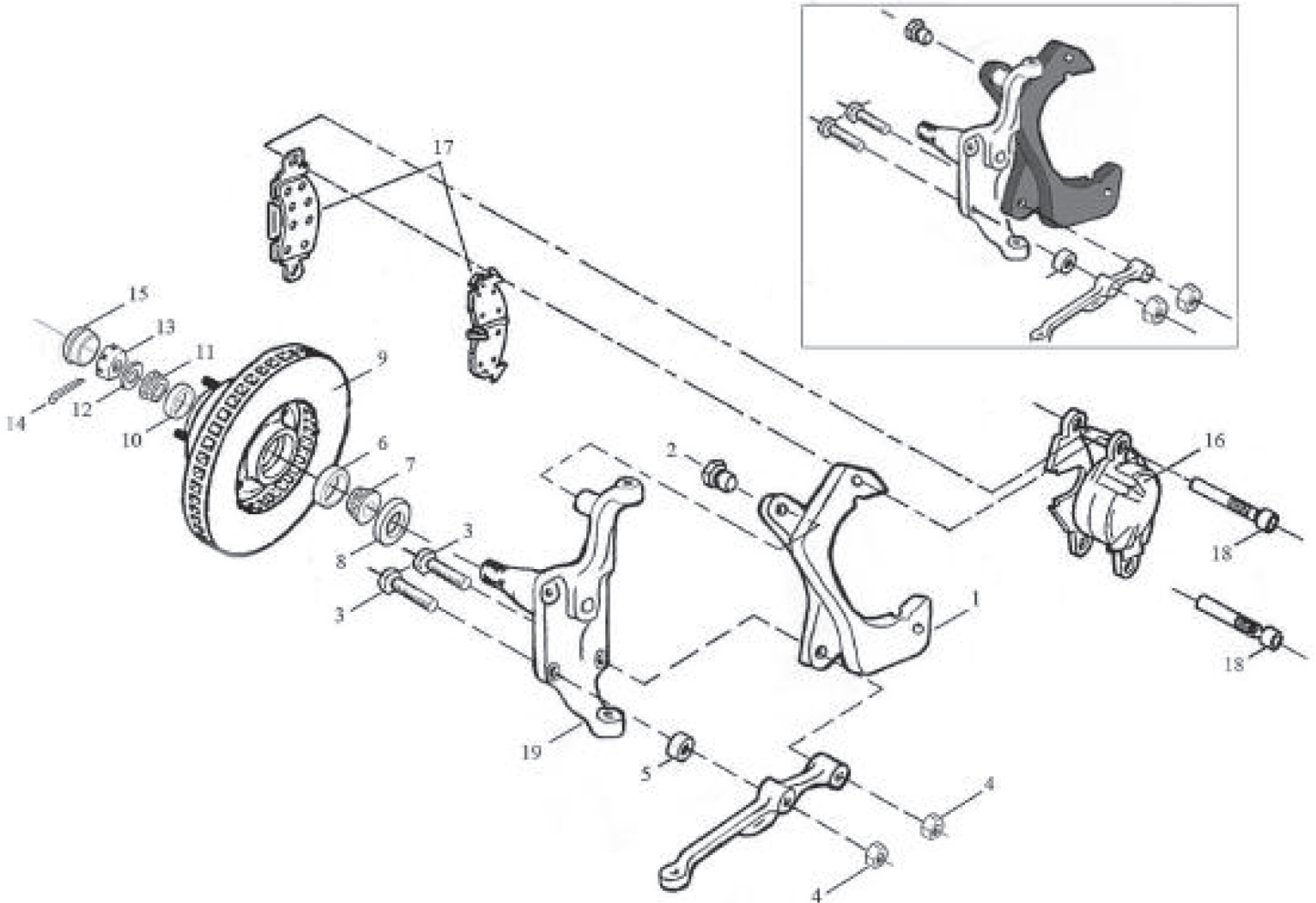
- Bolts onto stock 1955-57 spindles with no machine work.
- Includes 11" rotors and 1969-72 GM calipers (7/16"-20 inlets).
- Brake pads, bearings, seals, hoses, and hardware are included making this a complete bolt on kit.

**NOTE:** May not clear some 14" wheels

KIT CONTENTS			
Index #	Part Number	Description	Quantity
1*	916-31915	Hardware kit, 1955-57 Chevy bracket kit	1
2	In Hardware Kit	5/8"-18 x 1" GR 8 hex cap screw (with head cut down)	2
3	In Hardware Kit	7/16"-20 x 2-1/2" GR 8 hex cap screw	4
4	In Hardware Kit	7/16"-20 lock nuts	4
5	In Hardware Kit	1/4" thick spacers	2
6	Supplied in rotor	Inner wheel bearing cup	2
7	912-TLM67048	Inner wheel bearing cone	2
8	912-S18543	Seal, 1.875 x 2.40 x .27	2
9	910-65390	1969-72 GM 11" midsize rotors	2
10	Supplied in rotor	Outer wheel bearing cup	2
11	912-TLM11949	Outer wheel bearing cone	2
12	In spindle nut kit	Spindle washer	2
13	In spindle nut kit	Spindle nut	2
14	In spindle nut kit	Cotter pin	2
15**	In Hardware Kit	Dust cap (pair)	1
16	910-31035-L	1969-77 GM midsize caliper (left)	1
	910-31035-R	1969-77 GM midsize caliper (right)	1
17	919-3382	Brake pads (set)	1
18	In Hardware Kit	Caliper bolts	4
19**		Spindle	2
	910-616005	Spindle nut kit	1
Other Parts Needed			
**	617-8562	16" Stainless steel brake line kit	1
* Bracket kit parts only			
** Not included in kit			

# INSTRUCTIONS

© 2025, Speedway Motors, Inc.



## Brake Installation Alert:

The selection and installation of brake components should only be done by personnel experienced in the proper installation and operation of braking systems. The installer must use his/her own discretion to determine the suitability of the brake components and brake kits for every particular application. Speedway Motors makes no warranties, either expressed or implied, including any warranty of merchantability or fitness for a particular purpose with respect to the goods identified on the face of the invoice. There is no warranty expressed or implied as to whether the goods sold hereby will protect the purchaser or ultimate user of such goods from injury or death.

# INSTRUCTIONS

© 2025, Speedway Motors, Inc.

**SPEEDWAY**  
motors®

## Installation Instructions:

1. Using the parts list supplied, double check that you have received all the parts in the kit.
  2. Remove the old brakes and backing plates. Clean and inspect the spindles.
  3. Install the caliper bracket (#1) to the spindle, orienting it so the caliper will mount to the front side of the spindle. Install the special 5/8"-18 x 1" upper caliper bolt (#2) through the bracket and into the spindle.
- NOTE:** Make sure you use thread locker on the threads. Install the 7/16-20 x 2-1/2" lower caliper bracket bolt (#3) through the spindle, caliper bracket and steering arm. Attach with the 7/16-20 lock nut (#4). Install the second 7/16-20 x 2-1/2" steering arm bolt through the spindle, adding the 1/4" spacer (#5) in between the spindle and the steering arm. Attach with the 7/16-20 locknut (#4). Torque the two lower 7/16" bolts to 25-37 ft. lbs. and the upper 5/8" bolt to 73-110 ft. lbs.
4. Temporally install the inner bearing (#7), rotor (#9), outer bearing (#11), washer (#12) and spindle nut (#13). Do not pack the bearings at this time.
  5. Adjust the bearing preload as normal. Mark spindle for location of cotter pin. Disassemble and drill a 5/32" hole in the spindle for cotter pin. Thoroughly clean to remove any metal shavings.
  6. Pack and install the inner bearings (#7) with fresh disc brake bearing grease, and install the grease seals (#8). Seals must be installed straight. A seal installation tool works well for this.
  7. Install the rotor on the spindle. Pack the outer bearing (#11) and install in the rotor, followed by the washer (#12) and the spindle nut (#13). Adjust the bearing preload as normal. Install the cotter pin (#14) and dust cap (#15).
  8. Install the brake pads (#17) into the calipers (#16). Install the calipers into the caliper mounting brackets with the bleeders pointing up. Only use the correct GM mounting bolts (#18). Since the calipers mount to the front side of the spindle the right side caliper will mount on the left side and the left side caliper will mount to the right side.
  9. Install new brake lines, making sure the lines have clearance through the entire suspension travel and turning radius. Bleed the system as normal.
  10. Before operating the vehicle, test the brakes under controlled conditions. Make several stops in a safe area from low speeds and gradually work up to operating speeds.